

Uniform Policy

Uniform Policy



Effective: June 2024



Arndell
Anglican College

TABLE OF CONTENTS

College Uniform Expectations	2
Uniform Change Over	2
Non-compliance with the College Uniform Policy	3
College Uniform Requirements	4
Pre-Kindergarten	4
Kindergarten – Year 2	5
Year 3 – Year 6	7
Year 7 – Year 9	9
Year 10 – Year 12	11
Dress / Skirt Length	13
Sport Short Length	13
Acrylic Nails and Nail Polish	14
Dress Uniform Shoes	14
Sport Shoes	15
Socks	15
Facial Hair	15
Hair Styles	16
Jewellery	17
Make-up	17
Modesty	18
Non-College Uniform Dress Code (Mufti)	18
Name Labels	19
Representative Sports	19
College Sports Carnivals	19
Sport Uniform	20
State of Repair	20
Underwear	20
Year Group & Tour / Trip Uniforms	21
Year 6 Shirt	21
Year 12 Jersey	21
Europe Tour Jacket	21
Fiji Service & Mission Trip Shirt	21
Extreme Weather Conditions	22
College Photo Days	22
College Uniform Shop	23
Purchasing Second Hand Items	23

COLLEGE UNIFORM EXPECTATIONS

The correct College uniform is to be worn in its entirety when travelling to and from the College and home. Students are ambassadors for the College and as such are expected to wear the uniform with pride. Students must understand they are representing the College when traveling on public transport or attending off-campus events.

The College uniform is important for a number of reasons:

- it is a visual demonstration of a student's commitment to follow the College values, beliefs and mutual respect,
- it is a symbol of the College and a public declaration of a student's identification with the College,
- it demonstrates a student's readiness to participate in their educational journey and College events,
- it acts as a symbol of equality among all students, and
- it ensures students are appropriately dressed to meet safety guidelines, thus preparing them for workplace expectations.

The College reserves the right to enforce the College Uniform Policy and will make every effort to do so fairly and consistently.

UNIFORM CHANGE OVER



Students commence the year in summer uniform, change to winter uniform on the first Monday after Mother's Day and return to summer uniform on the first Monday after Father's Day.

NON-COMPLIANCE WITH THE COLLEGE UNIFORM POLICY



Non-compliance with the College Uniform Policy will incur consequences. Notes from parents/carers excusing students for not adhering to the College Uniform Policy are considered as a 'Request for a Uniform Variation'. If the 'Request for a Uniform Variation' is permanent, the request must be sent to the Deputy Head. If the Request for Uniform Variation is a one-off or temporary variation, for example due to an injury, the request must be sent to the relevant Leader of Learning for Junior School or Head of House for Secondary School who will make a decision in consultation with the relevant Head of School as required.

If a student misplaces items of uniform, such as black leather formal/dress shoes, it does not automatically permit them to wear their full College Sport Uniform. Appropriate approvals for a variation to uniform must be requested.

If students are asked by College staff to align with the College Uniform Policy, it is expected that they comply in a timely manner. Inability or refusal to comply will result in disciplinary action.

The College Uniform Policy also applies for representative and alternative clothing for events such as excursions and non-College uniform days (mufti days). Non-compliance with the expected attire may result in students being ineligible to attend or participate.

Any significant requests for variation to this Policy will be considered by the relevant Head of Junior School or Head of Secondary School.

COLLEGE UNIFORM REQUIREMENTS

The College has summer and winter uniform requirements for students, specific to their Year Group, as outlined in this Uniform Policy.

Pre-Kindergarten Uniform Requirements

Summer Uniform



College Blazer: Pre-Kindergarten students do not require a College blazer.

College Bag: All students must have the appropriate sized College backpack for Pre-Kindergarten.



College Library Bag: A College library bag is required when borrowing books from the Junior School Library.

Hats: The College sports jacket may be worn during summer or winter.

Winter Uniform



Shoes: Students are expected to wear an appropriate runner with their College sport uniform. Please refer to the acceptable/unacceptable shoes outlined in this Policy.

Socks: College white sport sock with blue and red stripe.

Coloured House Shirt: Pre-Kindergarten students are not permitted to wear the coloured House shirt.

Kindergarten - Year 2 Uniform Requirements

Kindergarten Apron



Summer Uniform



Winter Uniform



College Blazer:

A well fitted College blazer is a compulsory item of the winter uniform for all Junior School students. The College blazer is not to be worn with the summer uniform.

College Backpack / Sport Bag:

All students must have the appropriate sized College backpack for Junior School.

For excursions/sporting fixtures students must use a College bag (backpack or sport), unless specified otherwise e.g. cricket kit bag.

The College sport bag must be used to carry sporting gear to and from the College.

Students who require a bag for after school events should ensure this bag fits inside their College backpack or use the College sport bag. No other bag should be visible when a student is in College uniform.



College Library Bag:

A College library bag is required when borrowing books from the Junior School Library.

Hats:

The College has a 'No Hat, No Play' rule. Students are to wear their hat when playing outdoors and during timetabled sport and PE lessons.

Extra Warmth:

The College red jumper may be worn with the blazer or summer uniform. Sport jackets are not to be worn in addition to or instead of blazers with the summer or winter uniform.

In winter, students may wear a navy or red scarf and/or navy gloves.

Girls Bow:

The College Junior School bow is a compulsory item for the girls' summer and winter uniform.

Boys Tie:

The College tie is a compulsory item for the boys' winter uniform.

Kindergarten - Year 2 Uniform Requirements

Sport Uniform

Year 2 may wear the House Shirt on Sport Days.



Shoes: Students are expected to wear black leather formal/dress shoes with the dress uniform and an appropriate runner with their College sport uniform. Please refer to the acceptable/unacceptable shoes outlined in this Policy.

Socks: Boys Formal Uniform: Navy College sock with red stripe.

Girls Formal Uniform: Plain white sock which covers the ankle.

Sport Uniform: College white sport sock with blue and red stripes.

Stockings: Stockings are a compulsory item for the girls' winter uniform. Stockings must be Ink Navy in colour in microfiber or cotton.

Sport Uniform (navy shirt): The College sport uniform with navy shirt is to be worn for timetabled PE lessons, external sporting events (excluding College Carnivals) and excursions, where specified.

Sport Uniform Winter: Kindergarten - Year 2 students are to wear the fleecy sport jacket and tracksuit pants. Please note, it is not compulsory for tracksuit pants to be worn during winter. Students may wear shorts if preferred.

Coloured House Shirts: Kindergarten - Year 1 students are not permitted to wear the coloured House shirt.

Year 2 students may elect to wear the coloured House shirt for their weekly sport lesson with their class teacher and to College Sport Carnivals, though it is not mandatory.

Coloured House shirts are not permitted to be worn for excursions, external sporting events or during weekly PE lessons.

Kindergarten Apron: All Kindergarten students are required to wear an apron with their full College uniform and their sport uniform in both summer and winter. The apron is used to not only keep the uniform tidy, but to assist in identifying Kindergarten students in the playground at recess and lunch.

Year 3 - Year 6 Uniform Requirements

Summer Uniform



College Blazer:

A well fitted College blazer is a compulsory item of the winter uniform for all Junior School students. The College blazer is not to be worn with the summer uniform.

College Backpack / Sport Bag:

All students must have the appropriate sized College backpack for Junior School.

For excursions/sporting fixtures students must use a College bag (backpack or sport), unless specified otherwise e.g. cricket kit bag.

The College sport bag must be used to carry sporting gear to and from the College.

Students who require a bag for after school events should ensure this bag fits inside their College backpack or use the College sport bag. No other bag should be visible when a student is in College uniform.



Winter Uniform



College Library Bag:

A College library bag is required when borrowing books from the Junior School Library.

Hats:

The College has a 'No Hat, No Play' rule. Students are to wear their hat when playing outdoors and during timetabled sport and PE lessons.

Extra Warmth:

The College red jumper may be worn with the blazer or summer uniform. Sport jackets are not to be worn in addition to or instead of blazers with the summer or winter uniform.

In winter, students may wear a navy or red scarf and/or navy gloves.

Girls Bow:

The College Junior School bow is a compulsory item for the girls' summer and winter uniform.

Boys Tie:

The College tie is a compulsory item for the boys' winter uniform.

Year 3 - Year 6 Uniform Requirements

Sport Uniform



Shoes: Students are expected to wear black leather formal/dress shoes with the dress uniform and an appropriate runner with their College Sport Uniform. Please refer to the acceptable/unacceptable shoes outlined in this Policy.

Socks: Boys Formal Uniform: Navy College sock with red stripe.

Girls Formal Uniform: Plain white sock which covers the ankle.

Sport Uniform: College white sport sock with blue and red stripes.

Stockings: Stockings are a compulsory item for the girls' winter uniform. Stockings must be Ink Navy in colour in microfiber or cotton.

Sport Uniform (navy shirt): The College sport uniform with navy shirt is to be worn for timetabled PE lessons, external sporting events (excluding College Carnivals) and excursions, where specified.

Sport Uniform Winter: Students are to wear the microfiber sport jacket and track pants. Please note, it is not compulsory for track pants to be worn during winter. Students may wear shorts if preferred.

Coloured House Shirts: Students should wear the coloured House shirt for their weekly sport lesson with their class teacher and to College Sport Carnivals.

Coloured House shirts are not permitted to be worn for excursions, external sporting events or during weekly PE lessons.



Year 7 - Year 9 Uniform Requirements

Summer Uniform



College Blazer:

A well fitted College blazer is a compulsory item of the winter uniform for all Middle School students and for formal occasions, including excursions unless specified. The College blazer is not to be worn with the summer uniform.

College Backpack / Sport Bag:

All students must have the appropriate sized College backpack for Secondary School.

The College sport bag must be used to carry the sport uniform or sporting gear to and from the College.

For excursions/sporting fixtures students must use a College bag (backpack or sport), unless specified otherwise e.g. cricket kit bag.

Students who require a bag for after school events should ensure this bag fits inside their College backpack or use the College sport bag. No other bag should be visible when a student is in College uniform.



Winter Uniform



Hats:

The College hat must be worn in summer months from Father's Day to Mother's Day, at recess and lunch and during timetabled sport and PE lessons. The hat is not required in the winter months, unless otherwise specified.

Extra Warmth:

The College red jumper may be worn with the blazer or summer uniform. Sport jackets are not to be worn in addition to or instead of blazers with the summer or winter uniform.

In winter, students may wear a navy or red scarf and/or navy gloves.

Girls Bow:

The College Secondary School bow is a compulsory item for the girls' summer and winter uniform.

Boys Tie:

The College tie is a compulsory item for the boys' winter uniform.

Year 7 - Year 9 Uniform Requirements

Sport Uniform



Belt: Boys are to wear a black leather belt with buckle when wearing the navy trouser.

Shoes: Students are expected to wear black leather formal/dress shoes with the dress uniform and an appropriate runner with their College Sport Uniform. Please refer to the acceptable/unacceptable shoes outlined in this Policy.

Socks: Boys Formal Uniform: Navy College sock with red stripe.

Girls Formal Uniform: Plain white sock which covers the ankle.

Sport Uniform: College white sport sock with blue and red stripes.

Stockings: Stockings are a compulsory item for the girls' winter uniform. Stockings must be Ink Navy in colour in microfiber or cotton.

Sport Uniform (navy shirt): The College sport uniform with navy shirt is to be worn for timetabled PE lessons, external sporting events (excluding College Carnivals) and excursions, where specified.

Students must change into their sport uniform for their timetabled PE lesson (even in Period 1) and must change back into their dress uniform immediately after their PE lesson (even in Period 6).

Sport Uniform Winter: Students are to wear the microfiber sport jacket and track pants. Please note, it is not compulsory for track pants to be worn during winter. Students may wear shorts if preferred.

Coloured House Shirts: Coloured House shirts are only to be worn for College Sport Carnivals, House events or as otherwise specified. Coloured House shirts are not permitted to be worn for excursions, external sporting events or PE lessons.

Year 10 - Year 12 Uniform Requirements

Summer Uniform



College Blazer:

A well fitted College blazer is a compulsory item of the winter uniform for all Senior School (Year 10 – Year 12) students and for formal occasions, including excursions unless specified. The College blazer may be worn with the summer uniform.

Senior Stripe (Year 11 & 12):

The College blazer must have the senior stripe added. This can be arranged by contacting the Uniform Shop.

College Backpack / Sport Bag:

All students must have the appropriate sized College backpack for Secondary School.

The College sport bag must be used to carry the sport uniform or sporting gear to and from the College.

For excursions/sporting fixtures students must use a College bag (backpack or sport), unless specified otherwise e.g. cricket kit bag.

Students who require a bag for after school events should ensure this bag fits inside their College backpack or use the College sport bag. No other bag should be visible when a student is in College uniform.



Winter Uniform



Hats:

The College hat must be worn in summer months from Father's Day to Mother's Day, at recess and lunch and during timetabled sport and PE lessons. The hat is not required in the winter months, unless otherwise specified.

Extra Warmth:

The College red jumper may be worn with the blazer or summer uniform. Sport jackets are not to be worn in addition to or instead of blazers with the summer or winter uniform.

In winter, students may wear a navy or red scarf and/or navy gloves.

Girls Senior Scarf:

The College senior scarf with the College badge is a compulsory item for the girls' summer and winter uniform.

Boys Senior Tie:

The College senior tie is a compulsory item for the boys' summer and winter uniform.

Year 10 - Year 11 Uniform Requirements

Sport Uniform



Belt: Boys are to wear a black leather belt with buckle when wearing the navy trouser.

Boys Shirt: A white short sleeve shirt must be worn with the summer uniform.

A long sleeve white shirt or short sleeve white shirt may be worn with the winter uniform.

Shoes: Students are expected to wear black leather formal/dress shoes with the dress uniform and an appropriate runner with their College Sport Uniform. Please refer to the acceptable/unacceptable shoes outlined in this Policy.

Socks: Boys Formal Uniform: Navy College sock with red stripe.

Girls Formal Uniform: Plain white sock which covers the ankle.

Sport Uniform: College white sport sock with blue and red stripes.

Stockings: Stockings are NOT a compulsory item for the girls' winter uniform, though students may elect to wear them as part of the winter uniform for extra warmth. Stockings must be Ink Navy in colour in microfiber or cotton.

Sport Uniform (navy shirt): The College sport uniform with navy shirt is to be worn for timetabled PE lessons, external sporting events (excluding College Carnivals) and excursions, where specified.

Students must change into their sport uniform for their timetabled PE lesson (even in Period 1) and must change back into their dress uniform immediately after their PE lesson (even in Period 6).

Sport Uniform Winter: Students are to wear the microfiber sport jacket and track pants. Please note, it is not compulsory for track pants to be worn during winter. Students may wear shorts if preferred.

Coloured House Shirts: Coloured House shirts are only to be worn for College Sport Carnivals, House events or as otherwise specified. Coloured House shirts are not permitted to be worn for excursions, external sporting events or PE lessons.



DRESS / SKIRT LENGTH

Mandatory dress/skirt length is at the knee when standing. Parents/carers should check dresses/skirts and make adjustments when necessary.

Acceptable Length



Unacceptable Length



SPORT SHORT LENGTH

Mandatory sport uniform short length is to the end of the student's fingertips when arms are by their side. Shorts are to be loose fitting.

Acceptable Length



Unacceptable Length



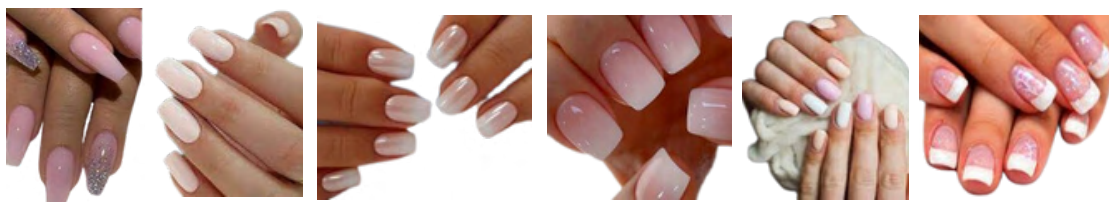
ACRYLIC NAILS AND NAIL POLISH

Only clear colourless nail polish may be worn. Acrylic nails are not permitted.

Acceptable Nails:



Unacceptable Nails:



DRESS UNIFORM SHOES

- Students are expected to wear black leather formal/dress shoes as per the approved styles below with the appropriate uniform sock.
- Soft leather shoes, black leather joggers, boots or suede shoes are not acceptable.
- Please note, buckle shoes / Mary Janes are allowed in Junior School, not in Secondary School.

Acceptable Dress Shoes:



Unacceptable Dress Shoes:



SPORT SHOES

Students are expected to wear runners with the College sport sock with their College Sport Uniform.

Acceptable Sport Shoes:



Unacceptable Sport Shoes:



SOCKS

The appropriate sock must be worn.

Boys Formal Uniform:

Navy College socks with red stripes.



Girls Formal Uniform:

Plain white sock which covers the ankle. No logos or symbols.



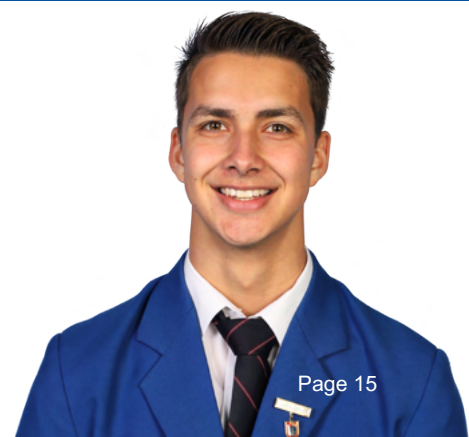
Sport Uniform:

College white sport sock with blue and red stripes.



FACIAL HAIR

- Facial hair of any kind is not permitted.
- Regular shaving is expected for those with facial hair.
- Sideburns are not to extend beyond the bottom of the ear lobe.
- Shaving lines or nicks into the eyebrow are not permitted.



HAIR STYLES

Hair styles should be of a natural colour, not to attract undue attention. Any students whose hairstyle causes undue comment will be referred to the applicable Head of School or Head of House.

Boys:

Boys are expected to have:

- well-groomed hair, neatly cut and kept at or above the collar with fringe above eyebrows,
- hair of natural and not heavily gelled. Unnatural colours and extreme contrasts created through the use of dyes are not permitted, and
- hair cut no less than a number 2, even length on side and back. Shaved heads are not permitted.

Unacceptable styles include 'undercuts', 'mulletts', 'slits', 'steps', 'lines', 'number grades', 'rats tails', and shaved patterns or partings, and other hair styles deemed inappropriate by the relevant Head of School or Head of House.

Unacceptable Hairstyles:



Girls:

Girls are expected to have:

- hair longer than the collar tied back, off the face and behind the head.
- fringes and other lengths of hair off the face and out of the eyes.
- hair of natural colour. Unnatural colours and extreme contrasts created through the use of dyes are not permitted, and
- hair adornments including ribbons, hair slides or bands, elastics etc. if worn, must be plain, simple and in College colours.

Unacceptable styles include 'undercuts', 'mulletts', 'slits', 'steps', 'lines', 'no. 1 grades', 'rats tails', and shaved patterns or partings, and other hair styles deemed inappropriate by the relevant Head of School or Head of House.

Unacceptable Hairstyles:



JEWELLERY

The following jewellery is permitted:

Boys:



- Wrist watch.
- One small, flat ring.
- Fine necklace may be worn under the shirt line.
- Facial and ear piercings are not permitted. Wearing band aids to cover piercings is not permitted.

Girls:



- Wrist watch.
- One small, flat ring.
- Fine necklace may be worn under the blouse / dress / shirt line.
- One pair of neutral coloured studs (max 5mm) or sleepers/huggies (max 15mm) in the ear lobes of both ears. Any other facial and / or additional ear piercings are not permitted. Any other piercings are not permitted and must have a clear stud in place. Wearing band aids to cover piercings is not permitted.

Anything outside this Uniform Policy, e.g. anklets or tooth gems, are not permitted.

MAKE-UP

Make-up is not to be worn by Junior School (Pre-Kindergarten – Year 6) students.

Make-up worn by Secondary School (Years 7 – 12) students must be discrete and not draw undue attention to the student. Students will be asked to remove make-up that is deemed to be inappropriate. Repeat offenders will be referred to the Head of Junior School, Head of Secondary School or Heads of House. This includes 'heavy' mascara, eyeliner, false eyelashes, eyelash extensions, coloured or glittered lip gloss or lip balm and heavy blush.

The use of the following make-up is accepted at the College for Secondary School students only:

- Light foundation,
- Light mascara, and
- Clear lip gloss or lip balm that is non-glitter and without any colouring.




MODESTY

- A student's attire must not draw undue attention to them.
- Uniforms must fit properly, not reveal their midriff or underwear.
- Boys' pants must be worn at the waist, not the hips or lower.

NON-COLLEGE UNIFORM DRESS CODE (MUFTI)

At College events/activities (including mufti days, camps, and performance events) where the College uniform is not required, students must follow the below guidelines:

- Students must wear neat, casual clothing that is suitable for the activity.
- Clothing must be appropriately modest and no more revealing than the normal College uniform.
 - Clothing must completely cover the student's midriff.
 - Clothing should cover the shoulders. No shoe string straps or sleeveless singlets to be worn as the outer garment.
 - Tops should have an appropriately modest neckline.
 - If dresses, skirts or shorts are worn, they must be of suitable length (at the knee) and style as per this Uniform Policy.
 - Jeans, shorts or skirts are not to be worn in such a manner that any part of the midriff or underwear is exposed.
 - Revealing active wear such as tights and/or leggings are not to be worn.
- Clothing must be clean and in good condition.
- Students must wear enclosed footwear to protect the feet. Thongs, Birkenstocks, slides, crocs or any style of sandals are not permitted.
- Students must not wear clothing with inappropriate slogans, symbols and graphics.
- Normal College requirements for hair, jewellery and make-up as set out in this Uniform Policy apply.

A photograph of two young children, a girl and a boy, sitting on a blue slide at a playground. They are both wearing blue school uniforms. The girl is on the left, and the boy is on the right. They are both smiling and looking towards the camera. The background shows other playground equipment and trees.

Any student who breaches the above dress regulation for non-College uniform days, will be withdrawn from class, the playground or any other College activity/event and may be asked to go home immediately and may lose the privilege of wearing non-College uniform for any other events held during the year.

NAME LABELS

All clothing must be clearly and permanently labelled (on the inside) with the student's name.

John Smith

REPRESENTATIVE SPORTS

Representative Sport shirts, shorts and jackets are only to be worn when competing at the relevant event. Students are not to wear any representative uniform items as part of the regular College Sport Uniform for their timetabled Sport, PE Lesson or Gala Days.

Students representing the College in external sporting events that do not require a Representative Shirt or team uniform are to wear the full College Sports Uniform (navy shirt). Coloured House shirts are not permitted.

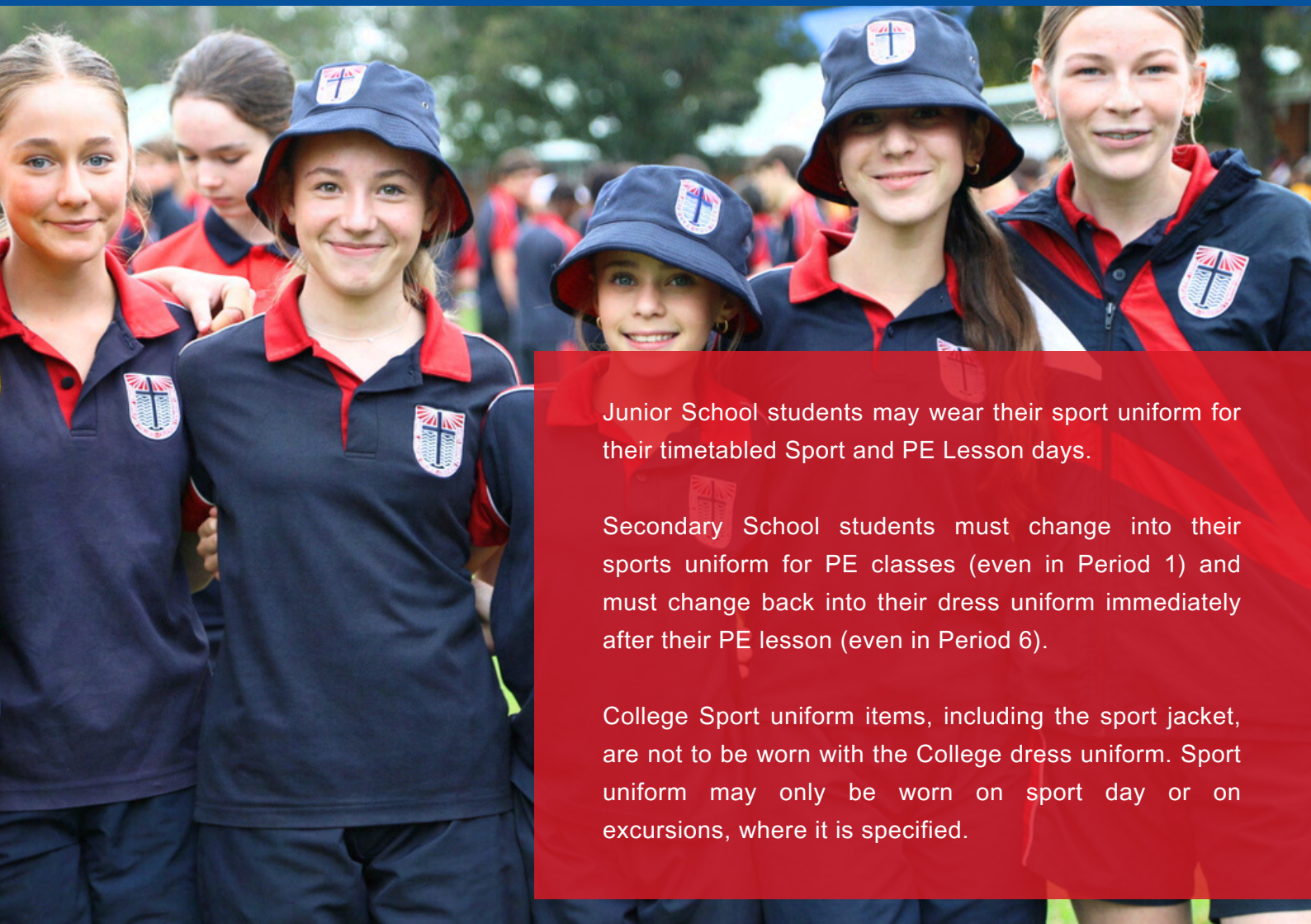


COLLEGE SPORTS CARNIVALS

Students must wear their coloured House shirt on College Carnival days with the appropriate footwear as outlined in this Uniform Policy.



SPORT UNIFORM



Junior School students may wear their sport uniform for their timetabled Sport and PE Lesson days.

Secondary School students must change into their sports uniform for PE classes (even in Period 1) and must change back into their dress uniform immediately after their PE lesson (even in Period 6).

College Sport uniform items, including the sport jacket, are not to be worn with the College dress uniform. Sport uniform may only be worn on sport day or on excursions, where it is specified.

STATE OF REPAIR

Uniforms must be kept clean and in good repair. Garments may not be worn with holes or tears in them or where the hem is down. Significant damage to any item of uniform will require the item being replaced. The College will request parents/carers to replace any item of uniform deemed unacceptable or not in good repair.

UNDERWEAR

Coloured t-shirts or t-shirts with designs on them must not be worn as underwear. Girls must not wear coloured underwear that is visible through their blouse.

YEAR GROUP & TOUR / TRIP UNIFORMS

Year 6 Shirt

Year 6 students may wear their Year 6 Shirt on their timetabled Sport or PE lesson day or Gala Days held at the College. Year 6 shirts are not permitted to be worn on excursions or external sporting activities.



Year 12 Jersey

The Year 12 Jersey is an optional uniform item for Year 12 students only. The jersey may be worn in place of the College jumper or sport jacket only and may not be worn on formal occasions, special occasions, College Photo Days or on excursions. The Head of Secondary School will specify any other occasion where the jersey may or may not be worn. In winter, the College blazer is to be worn to and from home as the outer garment.

Europe Tour Jacket

The Europe Tour jacket is to be worn exclusively during the trip. Students are not permitted to wear the jacket as part of the College summer or winter uniforms.



Fiji Mission & Service Trip Shirt

The Fiji Mission & Service Trip shirt is to be worn during the trip and during fundraising activities and other functions as directed by staff.

EXTREME WEATHER CONDITIONS



In the event where the forecasted temperature for the day is to reach or exceed 38 degrees, students from Junior and Secondary School are permitted to wear the College Sport Uniform (navy shirt) for the day, including to and from the College. This will be communicated to parents/carers by the College via email and College App Broadcast the day prior, or earlier.

COLLEGE PHOTO DAYS

Students must wear the full winter uniform with the College blazer for formal College photographs. Sport and other uniforms will be notified to students, as required.

All hair must be tied back, no half up half down styles. Hair may be placed over the front of the right shoulder for individual portraits and sibling photos. Hair is not to be placed over the shoulder for group photos.

Students who do not meet the College Uniform Policy, particularly for hair styles, will not have their photo taken. This includes Year Group, House and individual photos.



COLLEGE UNIFORM SHOP

Uniform items should be purchased from the College Uniform Shop. The Uniform Shop is operated by T. D. Noone Pty Ltd and is located on the College Campus, just inside the entry of Gate 1 on the right, marked by the red pin on the below site map. There is parking outside the shop and pedestrian access if you park elsewhere.

Opening Hours

Please refer to the College website for opening hours:

<https://www.arndell.nsw.edu.au/parent-information/uniform-policy-shop/>

Contact

Email: arndell@noone.com.au

Phone: 4572 3254

Purchasing Second Hand Items

The College Uniform Shop holds a range of quality, second hand uniform items for sale.

If you are purchasing second hand uniform items from online marketplaces or other parents / carers, please be aware of the correct uniform requirements for your child's Year Group as outlined in this Uniform Policy.

Uniform Shop

118 - 124 Wolseley Road
Oakville



Arndell

Anglican College



118 - 124 Wolseley Road
Oakville NSW 2765

PO Box 4063
Pitt Town NSW 2756

T +61 2 4572 3633
F +61 2 4572 3849

arndell.nsw.edu.au